




# Capability Statement

"your partners in steel framing"

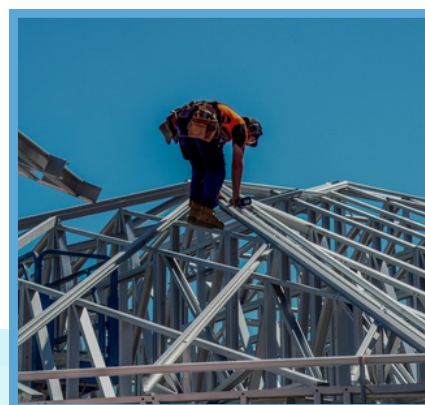
**Steel**   
**Frame**  
**Designs**

## Introduction:

Steel Frame Designs is a leading provider of steel frame solutions for residential and small commercial projects, specializing in granny flats. We offer a comprehensive service from design and engineering to supply and building permit assistance, delivering cost-effective and efficient building solutions.

## Our Approach:

Instead of navigating the complexities of dealing directly with busy steel factories, Steel Frame Designs offers a streamlined and efficient solution. We leverage our core strength in steel design to optimize your plans, minimizing unnecessary steel usage and reducing material costs. This design-driven approach, combined with our role as a broker of leading steel factories, enables us to provide you with a significantly faster service. By taking control of the design and engineering, we ensure accuracy, avoid delays common with factory direct orders, and ultimately pass on substantial cost savings to our clients – often up to 30% – through wholesale rates.



## Our Steel Framing Profile sizes:

We offer a comprehensive range of light gauge steel framing solutions using G500 AM150 specification steel, with various size profiles to suit diverse project requirements.

## Cyclonic Conditions

Our steel framing can be designed and manufactured to meet cyclonic conditions with minor fixing upgrades.

|                                   |
|-----------------------------------|
| WALL MATERIAL 64mm .55 STUD (m)   |
| WALL MATERIAL 64mm .75 STUD (m)   |
| WALL MATERIAL 64mm 1.0 STUD (m)   |
| WALL MATERIAL 75mm .75 STUD (m)   |
| WALL MATERIAL 75mm 1.15 STUD (m)  |
| WALL MATERIAL 89mm .75 STUD (m)   |
| WALL MATERIAL 89mm 1.0 STUD (m)   |
| WALL MATERIAL 89mm 1.15 STUD (m)  |
| WALL MATERIAL 150mm .75 STUD (m)  |
| WALL MATERIAL 150mm 1.15 STUD (m) |
| WALL MATERIAL 150mm 1.60 STUD (m) |

## Design and Manufacturing System:

We employ the FRAMECAD system, a leading technology for designing and manufacturing steel frames, made in New Zealand.

## FRAMECAD Self Engineering

- The FRAMECAD Structure software facilitates real-time engineering calculations during the design process, ensuring compliance with load, deflection, and force requirements.
- The software automatically generates a design checklist based on building codes and design factors.
- The enhanced 3D view simplifies the process with easy-to-follow truss, joist, and wall builders.



## Engineering Service

We provide a one-stop shop, including engineering sign-off for your steel frame projects.

## Compliance and Standards

Our steel framing solutions adhere to the applicable Australian standards, which include the following:

- National Construction Code (NCC)
- AS/NZS 1170.0:2002
- AS/NZS 1170.1:2002
- AS/NZS 1170.2:2021
- AS 4055-2012
- AS 4100 Steel Structure Code
- AS 4600:2018 Cold Formed Steel Structures
- AS 1397
- NASH 2014
- NATSPEC STRUCTURE 0342 Light Steel Framing Clauses 3.1 to 3.7





## Warranty:

We offer a 50-year warranty, as per product supplier terms and conditions

## Why Choose Steel Frame Designs

- **Custom Design Solutions:** Tailored designs to meet your specific granny flat or small commercial project requirements.
- **End-to-End Service:** From initial design and engineering to building permit assistance, we've got you covered.
- **Faster Turnaround Times:** Our streamlined process ensures efficient delivery and reduces project delays.
- **Wholesale Rates:** Benefit from significant cost savings with our direct access to steel factories.
- **Durable and Sustainable:** Steel framing offers superior strength, longevity, and termite resistance.
- **Easy to Install:** Our kits are designed for straightforward assembly, making owner-building a viable option.
- **Expert Support:** Dedicated assistance throughout your project, ensuring a smooth and successful build.

